

## CASE STUDY

**Reinforcement | Rural Road | D1506 Kwanyuswa, KZN**

Oct 2013

Client Kwazulu Natal Dept of Transport

Contractor Phambili Construction

Product **Multi-Cell®** | 9 000m<sup>2</sup>

Consultant Naidu Consulting

Rep Paul Lombard

### Problem

Due to a combination of a lack of maintenance, steep gradients with poor drainage, and heavy rainfall, the gravel surface had been completely removed, exposing the in-situ, loose and slippery residual decomposed granite. Access was very difficult for private vehicles, buses, taxis and pedestrians, which make up the bulk of the traffic within the local community. Asphaltting would be impossible due to the steep gradients and the costs involved.

### Solution

100 mm thick **Multi-Cell®** was specified for this road as it is traversed mainly by small vehicles and pedestrians.

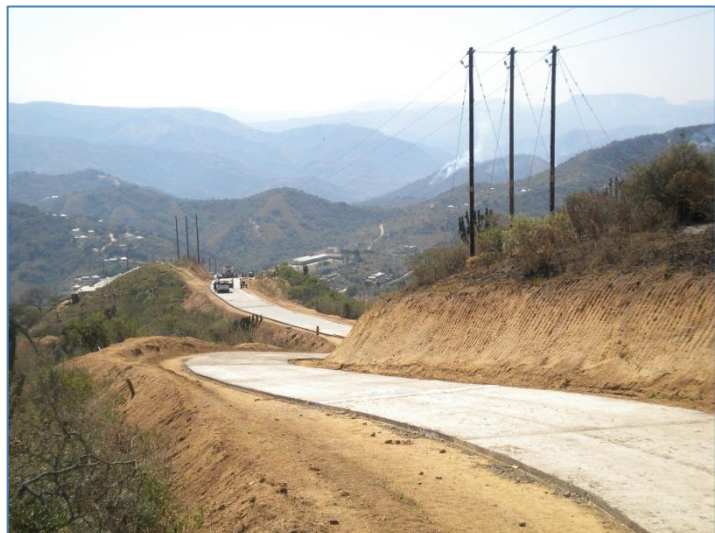
With the help of local labour who were trained on-site by a foreman, Phambili Construction installed the **Multi-Cell®** which was then in-filled with ready-mix concrete.

### Benefits

Compared to the asphalt alternative, significant savings were seen and the handling / workability of **Multi-Cell®** made it easy to install – even by local community members with basic training.



*Local community labour with basic training, was used to install **Multi-Cell®***



*1.6km of steep road was made serviceable*