



SoilSaver®

The Natural Solution For Soil Erosion Problems



JHB: Tel +27 11 922 3300
CT: Tel +27 21 531 8110
KZN: Tel +27 31 717 2300
EL: Tel +27 43 727 1055
PE: Tel +27 41 453 0755

| Fax +27 11 392 1112
| Fax +27 21 531 5498
| Fax +27 31 702 0435
| Fax +27 43 727 1065

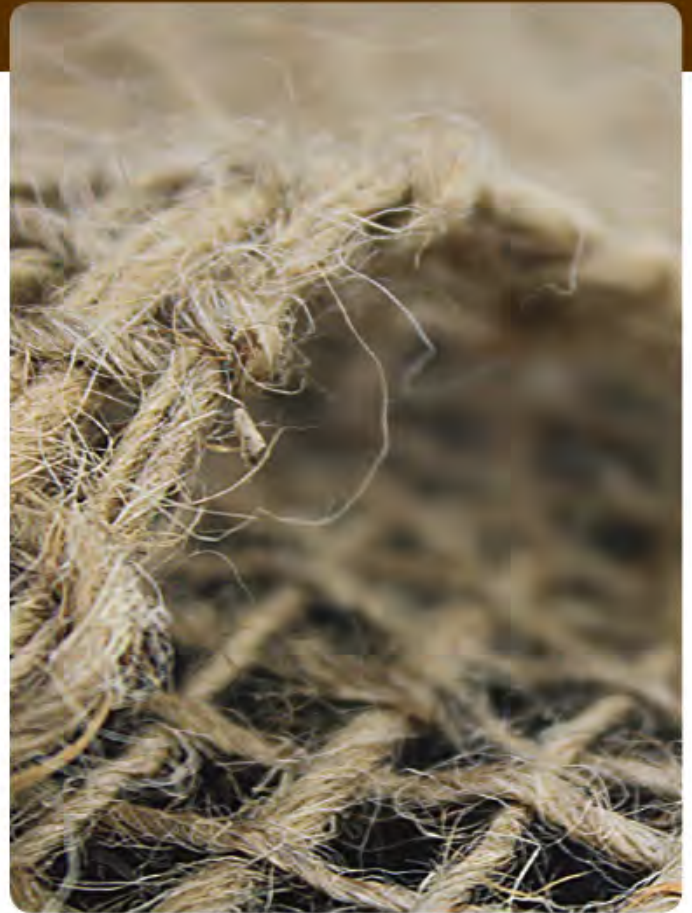
WEB: www.kaytech.co.za

Properties

SoilSaver® is a woven 100% jute yarn comprising a coarse 65% open mesh structure. This natural fibre mesh protects bare soil from the natural elements and provides erosion control where support for sustained vegetation is required.

Conserving ground moisture is important for developing seeds and this is one of the functions of **SoilSaver®**. The space between the strands allows for plant growth and for light to reach the ground. Once plant roots have established, **SoilSaver®** decomposes and because it contains no toxins, plastics or pollutants, is ecologically safe.

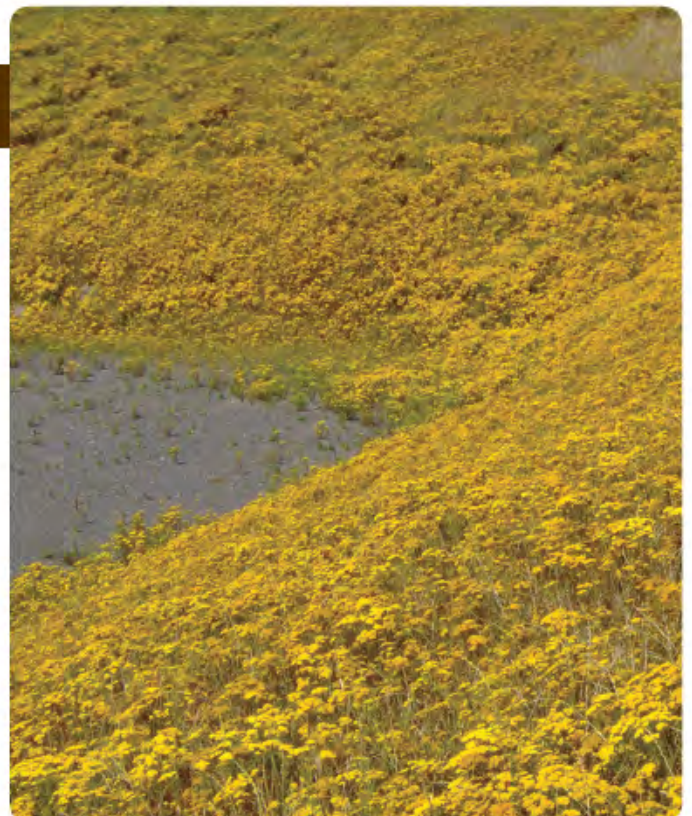
SoilSaver® is of a flexible nature and drapes to conform to ground surface contours and irregularities. During overland waterflow, the jute absorbs any splash impact and each hairy strand of jute traps seeds and soil particles thereby reducing run-off velocity and preventing soil erosion. Provided it is correctly installed, **SoilSaver®** will not be lifted by wind, flowing water or growing plants. Any variety of grass, ground cover or indigenous vegetation suitable to the site can be used in conjunction with **SoilSaver®**.



Effective within the Environment

Trials have shown **SoilSaver®** to be effective in controlling soil erosion. **SoilSaver®** has been tested in a variety of ground conditions, climate extremes and on slopes of differing gradient. **SoilSaver®** has consistently compared well with other natural fibres and synthetic systems. **SoilSaver®** promotes growth by:

- Retaining up to five times its own weight of moisture
- Mitigating extremes of temperature
- Protecting seedlings from direct sun rays
- Reducing desiccation
- Offering some protection against birds and animals
- Allowing light and air through its open structure
- Preventing wind and water erosion around new growth roots



Application Areas

SoilSaver® is used wherever ground surfaces need to be stabilised and protected from soil erosion:

- Road and railway slopes, bridge abutments and median strips
- Drainage ditches, culvert and blanket drain outlets
- Dam, canal and river banks
- Agricultural and forestry areas
- Parks, airports, golf courses and housing estates
- Landfill cappings, slag heap and tailings dam reclamation
- Sports field restoration
- New landscaping features
- National parks, heritage sites and botanical gardens

In any climatic conditions:

- Where initial heavy rainfall may cause scour;
- Where slopes are particularly steep
- Where soil is of an erodible nature
- Where topsoil has been stripped
- Where rainfall is unpredictable or insufficient
- On newly seeded or planted irrigated slopes
- Following fire damage

Product Benefits

SoilSaver® is economical

SoilSaver® is relatively inexpensive compared with other natural materials. Simple and convenient to lay, labour cost is minimal.

SoilSaver® is environment-friendly

Unlike some other natural materials, **SoilSaver®** does not draw upon valuable nitrogenous reserves as it decomposes. On the contrary, its residue is beneficial, adding fibres which improve the structure of the soil. This benefit impacts positively on both animal and agricultural farms where vegetation is quickly and sustainably established using the product. **SoilSaver®** has a natural appearance.

SoilSaver® is easy to apply

Convenient and light weight

SoilSaver® is supplied in highly compressed bales of lapped lengths that can easily be carried up a slope by one person.

No special skills

Applying **SoilSaver®** does not require skilled labour, special tools or equipment. It is simply rolled out and pegged down at predetermined intervals. It is easily cut and shaped to accommodate plants and follow existing ground contours.

Seed it and leave it

Seeding can take place before or after laying **SoilSaver®** and with or without prior mulching. Saplings and shrubs can be planted through the open mesh with any selected ground cover. Once roots take hold and vegetation is established, **SoilSaver®** decomposes to add natural fibres to the soil.



Specifications

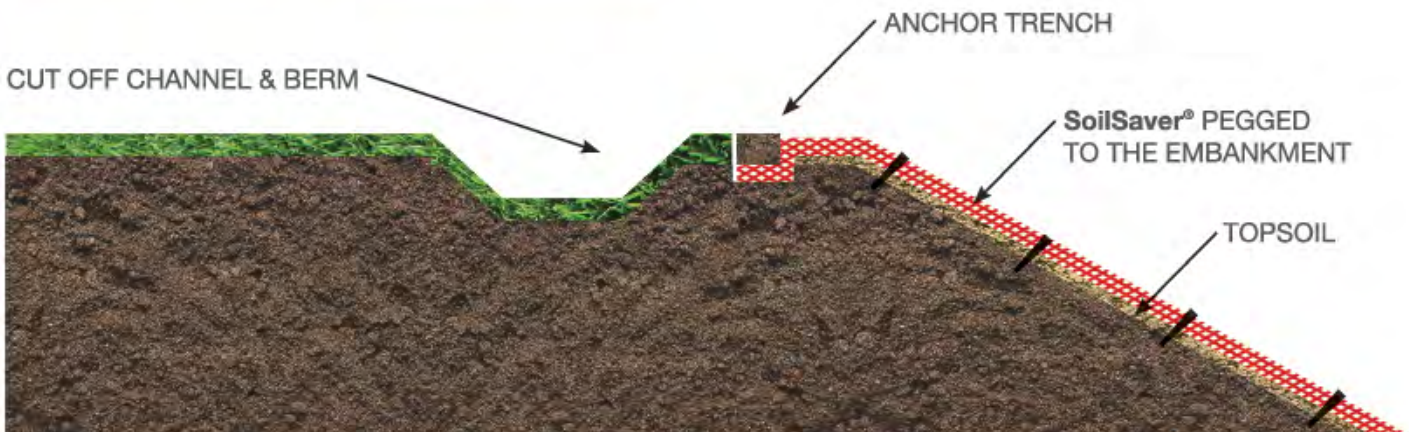
MATERIAL	100% Natural jute fibre	
LENGTH	68.5 metre lapped lengths in bales as required	
WIDTH	1,22 metre	
THICKNESS	5 mm approximate	
OPEN AREA	65% approximate	
OPENINGS	±10 x 10 mm	
WEIGHT	292	g/m ²
CONSTRUCTION	10,8	Warp Threads/100 mm
(Plain open weave, single yarn)	12,0	Weft Threads/100 mm



Installation Instructions

1. Level the area, removing rocks, roots etc. to allow maximum soil contact with **SoilSaver**[®].
2. Lay **SoilSaver**[®] loosely to closely match topsoil contours taking care not to stretch **SoilSaver**[®] between anchor points.
3. Covering a sloped area is easily achieved by unfolding the **SoilSaver**[®] from the top of the slope. Successive lapped lengths should be overlapped by 150 mm or sewn together with Sisal twine.
4. When unfolding the **SoilSaver**[®], the beginning of the lapped length should be anchored in a lock trench approx. 150 mm deep.
5. Peg down **SoilSaver**[®] at 1 m grid intervals both down and across the slope. Wooden pegs of 500 mm or longer, notched to snag the fabric are recommended.
6. Avoid openings between adjacent lengths.

Typical Fastening Details



DISCLAIMER: The application, handling and conditions of use of our products are critical and beyond our control. Information given by us in our documentation or orally, or by any employee or agent and any advice, recommendation or assistance, is given in good faith but without creating any obligation or warranty.

© Kaymac (Pty) Limited t/a Kaytech 2015