



Bidim Temporary Reinforcement Edwin Swales Drive, KZN

CASE STUDY

PROJECT: Edwin Swales VC Drive Rehabilitation and Widening
CLIENT: Ethekewini Municipality, Central Operations Entity, City Engineers Unit, Roads Department
CONSULTANT: Jeffares & Green, Iliso Consulting
CONTRACTOR: Group 5 KZN, Pandev

DATE: 2003/2004
QUANTITY: 2500m²
PRODUCT: bidim A6

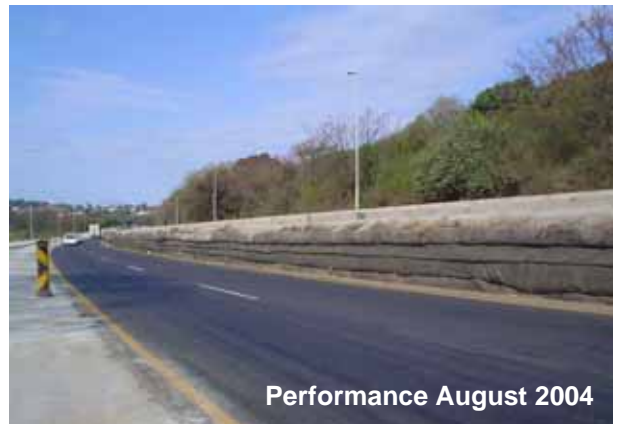
Bidim A6 was used to construct a temporary vertical wrap-around retaining wall within the median on Edwin Swales Drive CH 3640 to CH 4113 for the duration of construction, approximately one year. Two temporary lanes were required in each direction to accommodate the extremely high traffic volumes (40 000 AADT and 15% heavy vehicles) during the constricted concrete reconstruction of the existing two lanes and the addition of a third lane. The wall is 400m long by 1.8m high at the highest point.



Front face formwork



Laying bidim A6 tie-back



Performance August 2004

